

# Installation-Ready Coupling

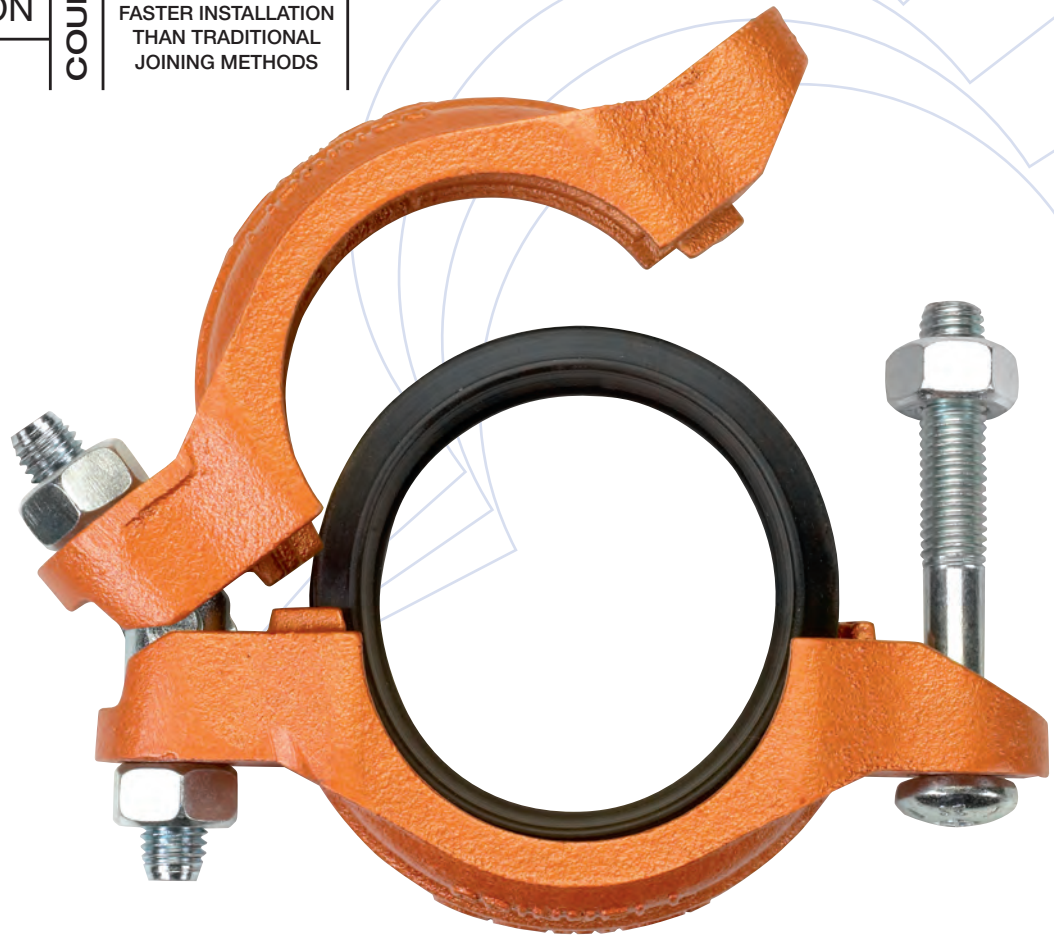
GRINNELL | Figure 640 | Pivot-Bolt | Rigid Coupling

- G** GRINNELL
- R** RAPID
- I** INSTALLATION
- P** PIVOT-BOLT

COUPLINGS

**10X**

UP TO 10 TIMES  
FASTER INSTALLATION  
THAN TRADITIONAL  
JOINING METHODS



ALL THE STRENGTH; HALF THE INSTALL TIME



Grinnell

## All the strength, half the installation time of standard couplings.

The GRINNELL Figure 640 Pivot-Bolt Rigid Coupling is a more efficient, reliable way to join rolled grooved, hard-drawn copper tubing than traditional soldering (sweating) of joints. The Figure 640 securely grips the entire circumference of a copper tube groove, yet installs in less than half the time of other standard grooved couplings.

Simply push the gasket onto the pipe joint, swing the coupling over the gasket, tighten a single bolt and the coupling is installed. The GRINNELL Pivot-Bolt Coupling allows an installer clear visual confirmation that the gasket is properly seated before the coupling is tightened... an assurance not offered by other installation-ready couplings.



Carbon steel pivot-bolts are heat treated with a minimum tensile strength of 130,000 psi.



Push-on style gasket is grade "EHT" EPDM compound, NSF-61 approved.

- Faster installation time** – ready to install right from the box... no disassembly required. Only one bolt to tighten.
- Visual confirmation of gasket placement** – installers can quickly and easily see if the gasket is properly seated before clamping the coupling.

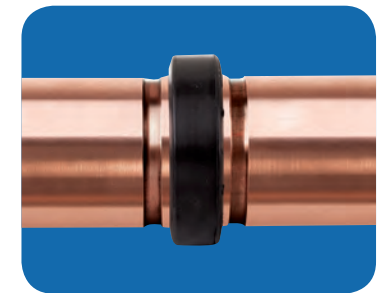
**G** GRINNELL  
**R** RAPID  
**I** INSTALLATION  
**P** PIVOT-BOLT

**COUPLINGS**  
**10X**  
 UP TO 10 TIMES  
 FASTER INSTALLATION  
 THAN TRADITIONAL  
 JOINING METHODS



- Reduced risk** – no need to alternate tightening of bolts. The presence of the pivot-bolt ensures the correct offset in every installation.
- No loose components** – since the pivot-bolt coupling design requires no nut removal, there's no risk for lost components to slow down the assembly process.

## Here's how it works:



**Push-on gasket** – Install gasket by pushing it over the tube until the center stop of the gasket is in contact with the end of the tube. Slide the other tube end into the gasket ensuring it has also made contact with the center leg of the gasket. Easy visual inspection ensures that the gasket is properly positioned.



**Swing the coupling over** – the pivot-bolt design means no nuts to untighten. The swing bolt simply slides into its intended slot.



**Tighten one nut** – no need to alternate tightening of bolts, tighten ONE bolt with an impact wrench and you're done.

For 160 years, professionals have turned to GRINNELL Mechanical Products for innovative ideas like the Figure 640, along with great service, professional engineering and planning support. A 10-year limited warranty... the industry's longest and strongest... is backed by our strength as a premier brand of Tyco International.

10  
YEAR LIMITED WARRANTY



## GRINNELL SOLUTIONS AT WORK

GRINNELL Mechanical Products' capability spans the full spectrum of industry applications, from residential, education and health care projects to the largest municipal, infrastructure and public works installations. Architects, engineers, contractors, and distributors worldwide have learned to trust GRINNELL Mechanical Products for partnership strength and ease in implementation.



**Grinnell**

[www.grinnell.com](http://www.grinnell.com)

#### Global Headquarters

United States of America  
1400 Pennbrook Parkway  
Lansdale, PA 19446  
Tel: +1-800-558-5236  
Fax: +1-800-877-1295

#### South America Headquarters

United States of America  
1802 S.W. 2nd Street  
Pompano Beach, FL 33069  
Tel: +1-954-781-0866  
Fax: +1-954-781-9330

#### Middle East Headquarters

United Arab Emirates  
P.O. Box 61355 Number  
Warehouse TB01, R/A 8  
Jebel Ali Free Zone,  
Dubai, United Arab Emirates  
Tel: +971 4 8838689  
Fax: +971 4 8838674

#### APAC Headquarters

Singapore  
2 Serangoon North Avenue 5,  
#07-01 Fu Yu Building,  
Singapore 554911  
Tel: +65 6577 4360  
Fax: +65 6481 8791

Copyright © 2011 Tyco International Ltd.  
GRINNELL is a registered trademark of Tyco International Ltd. or its affiliates.  
GM-640CBRO-201106

**tyco**