

BRANCH OUTLETS

The Figure 730 Mechanical Tees are rated at 500 psi (34.5 Bar) on standard weight pipe and can be used in place of a tee, a cross connection, or a welded outlet where a threaded or grooved outlet is needed. The Mechanical Tee is ideal for use in retrofit or equipment hookup installations, as it can

Tech Data: G210

be positioned along the pipe at the proper location in the field, ensuring exact lineup of the branch outlet connection. All Figure 730 Mechanical Tees are provided with a ductile iron lower housing section for increased strength and dependability. This provides stability, rigidity, and inhibits damage to the pipe during tightening.



Figure 730 Branch Outlet with Female NPT/ISO 7-1 Threaded Branch



Figure 730 Branch Outlet with Grooved Branch



For Fire Protection Pressure Rating and Listing / Approval information contact Tyco Fire & Building Products.

BRANCH
OUTLETS

Various end configurations are obtainable:



Threaded x Threaded



Grooved x Grooved



Threaded x Grooved

MATERIAL SPECIFICATIONS

Housing Specifications

- ASTM A-536 - Standard Specification for Ductile Iron Castings Grade 65-45-12
- Tensile Strength, minimum psi-65,000 (MPa-448)
- Yield Strength, minimum psi-45,000 (MPa-310)
- Elongation in 2" (50mm), minimum 12%
- ASTM A-153 - Standard Specification for Hot Dip Galvanizing

Bolt / Nut Specifications

Carbon steel oval neck bolts and nuts are heat treated and conform to the physical properties of ASTM A-183 with a minimum tensile strength of 110,000psi (758,422 kPa). Bolts and nuts are Zinc electroplated to ASTM B633.

Gold color coded metric bolts conforming to the physical properties of ASTM F568M are available upon request. Contact Tyco Fire & Building Products.

Gasket Specifications

Grade "E" EPDM gaskets have a green color code identification and conform to ASTM D-2000 for service temperatures from -30°F (-34°C) to 230°F (110°C). They are recommended for hot water not to exceed 230°F (110°C), plus a variety of dilute acids, oil free air and many chemical services. They are not recommended for petroleum services.

Grade "T" Nitrile gaskets have an orange color code identification and conform to ASTM D-2000 for service temperatures from -20°F (-29°C) to 180°F (82°C). They are recommended for petroleum products, vegetable oils, mineral oils, and air with oil vapors.

Coatings

- Orange - non lead (standard)
- RAL Red - non lead (optional)
- Hot Dipped Zinc Galvanized (optional)

BRANCH OUTLETS

Figure 730 Mechanical Tee - Threaded

Nominal Size Run x Branch Inches mm	Hole Dia.†		Max.‡ End Load (Branch) Lbs. kN	Nominal Dimensions					Bolt Size Inches mm	Tee Approx. Weight Lbs. Kg	Cross Approx. Weight Lbs. Kg
	Hole Inches mm	Max. Inches mm		A Inches mm	B Inches mm	C Inches mm	D Inches mm	E Inches mm			
2 x 1/2 50 x 15	1.50 38.1	1.63 41.3	277.1 1.2	2.62 66.5	4.88 124.0	3.07 78.0	2.12 53.8	1.59 40.4	3/8 x 2 1/4 M10 x 57	2.2 1.0	2.6 1.2
2 x 3/4 50 x 20	1.50 38.1	1.63 41.3	433.0 1.9	2.62 66.5	4.88 124.0	3.07 78.0	2.12 53.8	1.59 40.4	3/8 x 2 1/4 M10 x 57	2.2 1.0	2.6 1.2
2 x 1 50 x 25	1.50 38.1	1.63 41.3	679.1 3.0	2.62 66.5	4.88 124.0	3.07 78.0	2.12 53.8	1.59 40.4	3/8 x 2 1/4 M10 x 57	2.2 1.0	2.6 1.2
2 x 1 1/4 50 x 32	1.75 44.5	1.88 47.6	1082.1 4.8	2.78 70.6	4.88 124.0	3.32 84.3	1.93 49.0	1.59 40.4	3/8 x 2 1/4 M10 x 57	2.5 1.1	3.3 1.5
2 x 1 1/2 50 x 40	1.75 44.5	1.88 47.6	1417.6 6.3	2.75 69.9	4.88 124.0	3.32 84.3	1.93 49.0	1.59 40.4	3/8 x 2 1/4 M10 x 57	2.5 1.1	3.7 1.7
2 1/2 x 1/2 65 x 15	1.50 38.1	1.63 41.3	277.1 1.2	2.88 73.2	5.25 133.4	3.07 78.0	2.38 60.5	1.81 46.0	3/8 x 2 1/4 M10 x 57	2.7 1.2	3.1 1.4
2 1/2 x 3/4 65 x 20	1.50 38.1	1.63 41.3	433.0 1.9	2.88 73.2	5.25 133.4	3.07 78.0	2.38 60.5	1.81 46.0	3/8 x 2 1/4 M10 x 57	2.7 1.2	3.1 1.4
2 1/2 x 1 65 x 25	1.50 38.1	1.63 41.3	679.1 3.0	2.88 73.2	5.25 133.4	3.07 78.0	2.38 60.5	1.81 46.0	3/8 x 2 1/4 M10 x 57	2.7 1.2	3.1 1.4
2 1/2 x 1 1/4 65 x 32	2.00 50.8	2.13 54.0	1082.1 4.8	3.00 76.2	5.25 133.4	3.56 90.4	2.19 55.6	1.81 46.0	3/8 x 2 1/4 M10 x 57	3.1 1.4	3.9 1.8
2 1/2 x 1 1/2 65 x 40	2.00 50.8	2.13 54.0	1417.6 6.3	3.07 78.0	5.25 133.4	3.59 91.2	2.17 55.1	1.81 46.0	3/8 x 2 1/4 M10 x 57	3.3 1.5	4.3 1.9
2 1/2 x 2 65 x 50	2.00 50.8	2.13 54.0	2215.1 9.9	3.19 81.0	5.25 133.4	4.00 101.6	2.44 62.0	1.81 46.0	3/8 x 2 1/4 M10 x 57	3.5 1.6	4.4 2.0
76.1mm x 1/2 65 x 15	1.50 38.1	1.63 41.3	277.1 1.2	2.94 74.5	5.62 142.7	3.07 78.0	2.44 62.0	1.87 47.5	M10 x 57	2.7 1.2	3.1 1.4
76.1mm x 3/4 65 x 20	1.50 38.1	1.63 41.3	433.0 1.9	2.94 74.5	5.62 142.7	3.07 78.0	2.44 62.0	1.87 47.5	M10 x 57	2.7 1.2	3.1 1.4
76.1mm x 1 65 x 25	1.50 38.1	1.63 41.3	679.1 3.0	2.94 74.5	5.62 142.7	3.07 78.0	2.44 62.0	1.87 47.5	M10 x 57	2.7 1.2	3.1 1.4
76.1mm x 1 1/4 65 x 32	2.00 50.8	2.13 54.0	1082.1 4.8	3.06 77.7	5.62 142.7	3.56 90.4	2.25 57.2	1.87 47.5	M10 x 57	3.1 1.4	3.9 1.8
76.1mm x 1 1/2 65 x 40	2.00 50.8	2.13 54.0	1417.6 6.3	3.13 79.5	5.62 142.7	3.56 90.4	2.25 57.2	1.87 47.5	M10 x 57	3.3 1.5	5.1 2.3
76.1mm x 2 65 x 50	2.50 63.5	2.63 66.7	2215.1 9.9	3.25 82.6	5.62 142.7	4.00 101.6	2.50 63.5	1.87 47.5	M10 x 57	4.1 1.9	5.9 2.7
3 x 1/2 80 x 15	1.50 38.1	1.63 41.3	277.1 1.2	3.19 81.0	6.13 155.7	3.07 78.0	2.56 65.0	2.21 56.1	1/2 x 3 M12 x 76	3.7 1.7	4.5 2.0
3 x 3/4 80 x 20	1.50 38.1	1.63 41.3	433.0 1.9	3.19 81.0	6.13 155.7	3.07 78.0	2.56 65.0	2.21 56.1	1/2 x 3 M12 x 76	3.7 1.7	4.5 2.0
3 x 1 80 x 25	1.50 38.1	1.63 41.3	679.1 3.0	3.19 81.0	6.13 155.7	3.07 78.0	2.56 65.0	2.21 56.1	1/2 x 3 M12 x 76	3.7 1.7	4.5 2.0
3 x 1 1/4 80 x 32	1.75 44.5	1.88 47.6	1082.1 4.8	3.34 84.8	6.13 155.7	3.32 84.3	2.50 63.5	2.21 56.1	1/2 x 3 M12 x 76	3.9 1.8	4.9 2.2
3 x 1 1/2 80 x 40	2.00 50.8	2.13 54.0	1417.6 6.3	3.38 85.9	6.13 155.7	3.56 90.4	2.48 63.0	2.21 56.1	1/2 x 3 M12 x 76	4.2 1.9	5.5 2.5
3 x 2 80 x 50	2.50 63.5	2.63 66.7	2215.1 9.9	3.50 88.9	6.13 155.7	4.09 103.9	2.75 69.9	2.21 56.1	1/2 x 3 M12 x 76	4.7 2.1	6.5 2.9
4 x 1/2 100 x 15	1.50 38.1	1.63 41.3	277.1 1.2	3.69 93.7	7.13 181.1	3.07 78.0	3.06 77.7	2.78 70.6	1/2 x 3 M12 x 76	5.5 2.5	7.1 3.2
4 x 3/4 100 x 20	1.50 38.1	1.63 41.3	433.0 1.9	3.69 93.7	7.13 181.1	3.07 78.0	3.06 77.7	2.78 70.6	1/2 x 3 M12 x 76	5.5 2.5	7.1 3.2
4 x 1 100 x 25	1.50 38.1	1.63 41.3	679.1 3.0	3.69 93.7	7.13 181.1	3.07 78.0	3.06 77.7	2.78 70.6	1/2 x 3 M12 x 76	5.5 2.5	7.1 3.2
4 x 1 1/4 100 x 32	1.75 44.5	1.88 47.6	1082.1 4.8	3.92 99.6	7.13 181.1	3.32 84.3	3.00 76.2	2.78 70.6	1/2 x 3 M12 x 76	5.5 2.5	7.1 3.2
4 x 1 1/2 100 x 40	2.00 50.8	2.13 54.0	1417.6 6.3	4.00 101.6	7.13 181.1	3.56 90.4	2.98 75.7	2.78 70.6	1/2 x 3 M12 x 76	5.5 2.5	7.1 3.2

† Proper hole preparation is required for effective sealing and performance. Check the pipe seal surface within 5/8" (15.9mm) of the hole to be certain it is free from conditions that would affect proper gasket sealing. Remove any sharp or rough edges from the hole or upper housing contact area, that might affect assembly, proper seating of the locating collar or flow from the outlet. For crosses, ensure double outlet holes are aligned on opposite sides of the pipe. The use of threaded products other than steel pipe, such as dry pendants, etc. may not be compatible with the female threaded outlet on the Mechanical Tee. Always confirm compatibility by contacting Tyco Fire & Building Products.

‡ Maximum pressure and end load are total from all loads based on standard weight steel pipe. Pressure ratings and end loads may differ on other pipe materials and/or wall thickness. Contact Tyco Fire & Building Products for details.

Note: Outlet Threads conforming to ISO 7-1 are available, contact Tyco Fire & Building Products.

Please refer to General Notes on page 14.

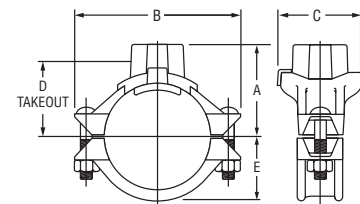


FIGURE 730 BRANCH OUTLET WITH FEMALE NPT/ISO 7-1 THREADED BRANCH (TEE CONFIGURATION)

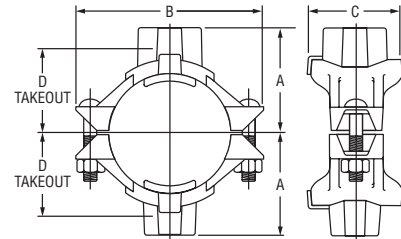


FIGURE 730 BRANCH OUTLETS WITH FEMALE NPT/ISO 7-1 THREADED BRANCH (CROSS CONFIGURATION)

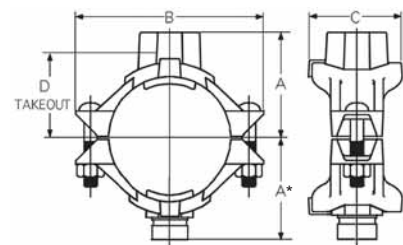


FIGURE 730 BRANCH OUTLET WITH ONE FEMALE NPT/ISO 7-1 THREADED BRANCH & ONE GROOVED BRANCH (CROSS CONFIGURATION)

* see pages 51 & 52 for dimensions

BRANCH
OUTLETS

BRANCH OUTLETS

Figure 730 Mechanical Tee - Threaded

Nominal Size Run x Branch Inches mm	Hole Dia.†		Max.‡ End Load (Branch) Lbs. kN	Nominal Dimensions					Bolt Size Inches mm	Tee Approx. Weight Lbs. Kg	Cross Approx. Weight Lbs. Kg
	Hole Inches mm	Max. Inches mm		A Inches mm	B Inches mm	C Inches mm	D Inches mm	E Inches mm			
4 x 2 100 x 50	2.50 63.5	2.63 66.7	2215.1 9.9	4.00 101.6	7.13 181.1	4.06 103.1	3.25 82.6	2.78 70.6	1/2 x 3 M12 x 76	6.0 2.7	8.1 3.7
4 x 2 1/2 100 x 65	2.75 69.9	2.88 73.0	3245.9 14.4	4.00 101.6	7.13 181.1	4.38 111.3	3.12 79.2	2.78 70.6	1/2 x 3 M12 x 76	6.0 2.7	8.1 3.7
4 x 76.1mm 100 x 65	2.75 69.9	2.88 73.0	3534.3 15.7	4.00 101.6	7.13 181.1	4.38 111.3	3.12 79.2	2.78 70.6	M12 x 76	6.0 2.7	8.1 3.7
4 x 3 100 x 80	3.50 88.9	3.63 92.1	4810.6 21.4	4.13 104.9	7.13 181.1	5.13 130.3	3.31 84.1	2.78 70.6	1/2 x 3 M12 x 76	7.0 3.2	13.5 6.1
5 x 1 1/2 125 x 40	2.00 50.8	2.13 54.0	1417.6 6.3	4.63 117.6	8.13 206.5	3.56 90.4	4.00 101.6	3.37 85.6	5/8 x 4 3/4 M16 x 121	6.5 2.9	7.7 3.5
5 x 2 125 x 50	2.50 63.5	2.63 66.7	2215.1 9.9	4.63 117.6	8.13 206.5	4.06 103.1	3.88 98.6	3.37 85.6	5/8 x 4 3/4 M16 x 121	7.1 3.2	8.1 3.7
5 x 2 1/2 125 x 65	2.75 69.9	2.88 73.0	3245.9 14.4	4.75 120.7	8.13 206.5	4.38 111.3	3.88 98.6	3.37 85.6	5/8 x 4 3/4 M16 x 121	7.3 3.3	8.7 3.9
5 x 76.1mm 125 x 65	2.75 69.9	2.88 73.0	3534.3 15.7	4.75 120.7	8.13 206.5	4.38 111.3	3.88 98.6	3.37 85.6	M16 x 121	7.3 3.3	8.7 3.9
5 x 3 125 x 80	3.50 88.9	3.63 92.1	4810.6 21.4	5.00 127.0	8.13 206.5	5.13 130.3	4.06 103.1	3.37 85.6	5/8 x 4 3/4 M16 x 121	7.6 3.4	14.7 6.7
165.1mm x 1 1/4 150 x 32	2.00 50.8	2.13 54.0	1082.1 4.8	5.13 130.3	9.25 235.0	3.56 90.4	4.25 108.0	3.90 99.1	M16 x 121	6.9 3.1	7.9 3.6
165.1mm x 1 1/2 150 x 40	2.00 50.8	2.13 54.0	1417.6 6.3	5.13 130.3	9.25 235.0	3.56 90.4	4.04 102.6	3.90 99.1	M16 x 121	7.4 3.4	8.9 4.0
165.1mm x 2 150 x 50	2.50 63.5	2.63 66.7	2215.1 9.9	5.13 130.3	9.25 235.0	4.06 103.1	4.31 109.5	3.90 99.1	M16 x 121	7.5 3.4	8.9 4.0
165.1mm x 2 1/2 150 x 65	2.75 69.9	2.88 73.0	3245.9 14.4	5.13 130.3	9.25 235.0	4.38 111.3	4.18 106.2	3.90 99.1	M16 x 121	7.5 3.4	11.1 5.0
165.1mm x 76.1mm 150 x 65	2.75 69.9	2.88 73.0	3584.3 15.7	5.13 130.3	9.25 235.0	4.38 111.3	4.18 106.2	3.90 99.1	M16 x 121	7.5 3.4	11.1 5.0
165.1mm x 3 150 x 80	3.50 88.9	3.63 92.1	4810.6 21.4	5.50 139.7	9.25 235.0	5.13 130.3	4.37 111.0	3.90 99.1	M16 x 121	9.5 4.3	14.1 6.4
165.1mm x 4 150 x 100	4.50 114.3	4.63 117.5	7952.2 35.4	5.38 136.7	9.25 235.0	6.13 155.7	4.56 115.8	3.90 99.1	M16 x 121	10.0 4.5	20.1 9.1
6 x 1 1/4 150 x 32	2.00 50.8	2.13 54.0	1082.1 4.8	5.13 130.3	9.25 235.0	3.56 90.4	4.25 108.0	3.90 99.1	5/8 x 4 3/4 M16 x 121	6.9 3.1	7.9 3.6
6 x 1 1/2 150 x 40	2.00 50.8	2.13 54.0	1417.6 6.3	5.13 130.3	9.25 235.0	3.56 90.4	4.04 102.6	3.90 99.1	5/8 x 4 3/4 M16 x 121	7.4 3.4	8.9 4.0
6 x 2 150 x 50	2.50 63.5	2.63 66.7	2215.1 9.9	5.13 130.3	9.25 235.0	4.06 103.1	4.31 109.5	3.90 99.1	5/8 x 4 3/4 M16 x 121	7.5 3.4	8.9 4.0
6 x 2 1/2 150 x 65	2.75 69.9	2.88 73.0	3245.9 14.4	5.13 130.3	9.25 235.0	4.38 111.3	4.18 106.2	3.90 99.1	5/8 x 4 3/4 M16 x 121	7.5 3.4	11.1 5.0
6 x 76.1mm 150 x 65	2.75 69.9	2.88 73.0	3534.3 15.7	5.13 130.3	9.25 235.0	4.38 111.3	4.18 106.2	3.90 99.1	M16 x 121	7.5 3.4	11.1 5.0
6 x 3 150 x 80	3.50 88.9	3.63 92.1	4810.6 21.4	5.50 139.7	9.25 235.0	5.13 130.3	4.37 111.0	3.90 99.1	5/8 x 4 3/4 M16 x 121	9.5 4.3	14.1 6.4
6 x 4 150 x 100	4.50 114.3	4.63 117.5	7952.2 35.4	5.38 136.7	9.25 235.0	6.13 155.7	4.56 115.8	3.90 99.1	5/8 x 4 3/4 M16 x 121	10.0 4.5	20.1 9.1
8 x 2 1/2 200 x 65	2.75 69.9	2.88 73.0	3245.9 14.4	6.25 158.8	12.50 317.5	4.38 111.3	5.12 130.0	4.90 124.5	3/4 x 4 3/4 M20 x 121	10.2 4.6	12.1 5.5
8 x 76.1mm 200 x 65	2.75 69.9	2.88 73.0	3534.3 15.7	6.25 158.8	12.50 317.5	4.38 111.3	5.12 130.0	4.90 124.5	M20 x 121	10.2 4.6	12.1 5.5
8 x 3 200 x 80	3.50 88.9	3.63 92.1	4810.6 21.4	6.50 165.1	12.50 317.5	5.13 130.3	5.37 136.4	4.90 124.5	3/4 x 4 3/4 M20 x 121	12.5 5.7	15.1 6.8
8 x 4 200 x 100	4.50 114.3	4.63 117.5	7952.2 35.4	6.38 162.1	12.50 317.5	6.13 155.7	5.56 141.2	4.90 124.5	3/4 x 4 3/4 M20 x 121	12.5 5.7	21.1 9.6

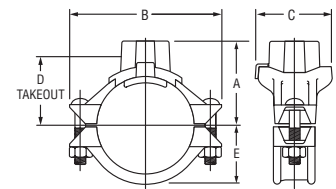


FIGURE 730 BRANCH OUTLET WITH FEMALE NPT/ISO 7-1 THREADED BRANCH (TEE CONFIGURATION)

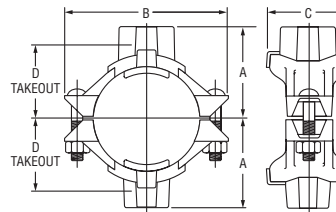


FIGURE 730 BRANCH OUTLETS WITH FEMALE NPT/ISO 7-1 THREADED BRANCH (CROSS CONFIGURATION)

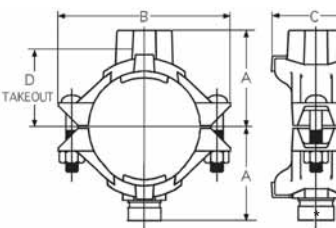


FIGURE 730 BRANCH OUTLET WITH ONE FEMALE NPT/ISO 7-1 THREADED BRANCH & ONE GROOVED BRANCH (CROSS CONFIGURATION)

* see pages 51 & 52 for dimensions

† Proper hole preparation is required for effective sealing and performance. Check the pipe seal surface within 5/8" (15.9mm) of the hole to be certain it is free from conditions that would affect proper gasket sealing. Remove any sharp or rough edges from the hole or upper housing contact area, that might affect assembly, proper seating of the locating collar or flow from the outlet. For crosses, ensure double outlet holes are aligned on opposite sides of the pipe. The use of threaded products other than steel pipe, such as dry pendants, etc. may not be compatible with the female threaded outlet on the Mechanical Tee. Always confirm compatibility by contacting Tyco Fire & Building Products.

‡ Maximum pressure and end load are total from all loads based on standard weight steel pipe. Pressure ratings and end loads may differ on other pipe materials and/or wall thickness. Contact Tyco Fire & Building Products for details.

Note: Outlet Threads conforming to ISO 7-1 are available, contact Tyco Fire & Building Products.

Please refer to General Notes on page 14.

BRANCH OUTLETS

Figure 730 Mechanical Tee - Grooved

Nominal Size Run x Branch Inches mm	Hole Dia.†		Max.‡ End Load (Branch) Lbs. kN	Nominal Dimensions				Bolt Size Inches mm	Tee Approx. Weight Lbs. Kg	Cross Approx. Weight Lbs. Kg
	Hole Inches mm	Max. Inches mm		A Inches mm	B Inches mm	C Inches mm	E Inches mm			
2 x 1¼ 50 x 32	1.75 44.5	1.88 47.6	1082.1 4.8	2.78 70.6	4.88 124.0	3.32 84.3	1.59 40.4	3/8" x 2¼" M10 x 57	2.5 1.1	3.3 1.5
2 x 1½ 50 x 40	1.75 44.5	1.88 47.6	1417.6 6.3	2.62 66.5	4.88 124.0	3.32 84.3	1.59 40.4	3/8" x 2¼" M10 x 57	2.5 1.1	3.7 1.7
2½ x 1¼ 65 x 32	2.00 50.8	2.13 54.0	1082.1 4.8	3.00 76.2	5.25 133.4	3.56 90.4	1.81 46.0	3/8" x 2¼" M10 x 57	3.1 1.4	3.9 1.8
2½ x 1½ 65 x 40	2.00 50.8	2.13 54.0	1417.6 6.3	3.07 78.0	5.25 133.4	3.59 91.2	1.81 46.0	3/8" x 2¼" M10 x 57	3.3 1.5	4.3 1.9
2½ x 2 65 x 50	2.00 50.8	2.13 54.0	2215.1 9.9	3.19 81.0	5.25 133.4	4.00 101.6	1.81 46.0	3/8" x 2¼" M10 x 57	3.5 1.6	4.4 2.0
76.1mm x 1¼ 65 x 32	2.00 50.8	2.13 54.0	1082.1 4.8	3.06 77.7	5.62 142.7	3.56 90.4	1.87 47.5	M10 x 57	3.1 1.4	3.9 1.8
76.1mm x 1½ 65 x 40	2.00 50.8	2.13 54.0	1417.6 6.3	3.13 79.5	5.62 142.7	3.56 90.4	1.87 47.5	M10 x 57	3.3 1.5	5.1 2.3
76.1mm x 2 65 x 50	2.50 63.5	2.63 66.7	2215.1 9.9	3.25 82.6	5.62 142.7	4.00 101.6	1.87 47.5	M10 x 57	4.1 1.9	5.9 2.7
3 x 1¼ 80 x 32	1.75 44.5	1.88 47.6	1082.1 4.8	3.34 84.8	6.13 155.7	3.32 84.3	2.21 56.1	½" x 3" M12 x 76	3.9 1.8	4.9 2.2
3 x 1½ 80 x 40	2.00 50.8	2.13 54.0	1417.6 6.3	3.38 85.9	6.13 155.7	3.56 90.4	2.21 56.1	½" x 3" M12 x 76	4.2 1.9	5.5 2.5
3 x 2 80 x 50	2.50 63.5	2.63 66.7	2215.1 9.9	3.50 88.9	6.13 155.7	4.09 103.9	2.21 56.1	½" x 3" M12 x 76	4.7 2.1	6.5 2.9
4 x 1¼ 100 x 32	1.75 44.5	1.88 47.6	1082.1 4.8	3.92 99.6	7.13 181.1	3.32 84.3	2.78 70.6	½" x 3" M12 x 76	5.5 2.5	7.1 3.2
4 x 1½ 100 x 40	2.00 50.8	2.13 54.0	1417.6 6.3	4.00 101.6	7.13 181.1	3.56 90.4	2.78 70.6	½" x 3" M12 x 76	5.5 2.5	7.1 3.2
4 x 2 100 x 50	2.50 63.5	2.63 66.7	2215.1 9.9	4.00 101.6	7.13 181.1	4.06 103.1	2.78 70.6	½" x 3" M12 x 76	6.0 2.7	8.1 3.7
4 x 2½ 100 x 65	2.75 69.9	2.88 73.0	3245.9 14.4	4.00 101.6	7.13 181.1	4.38 111.3	2.78 70.6	½" x 3" M12 x 76	6.0 2.7	8.1 3.7
4 x 76.1mm 100 x 65	2.75 69.9	2.88 73.0	3534.3 15.7	4.00 101.6	7.13 181.1	4.38 111.3	2.78 70.6	M12 x 76	6.0 2.7	8.1 3.7
4 x 3 100 x 80	3.50 88.9	3.63 92.1	4810.6 21.4	4.13 104.9	7.13 181.1	5.13 130.3	2.78 70.6	½" x 3" M12 x 76	7.0 3.2	13.5 6.1
5 x 1½ 125 x 40	2.00 50.8	2.13 54.0	1417.6 6.3	4.63 117.6	8.13 206.5	3.56 90.4	3.37 85.6	5/8" x 4¾" M16 x 121	6.5 2.9	7.7 3.5
5 x 2 125 x 50	2.50 63.5	2.63 66.7	2215.1 9.9	4.63 117.6	8.13 206.5	4.06 103.1	3.37 85.6	5/8" x 4¾" M16 x 121	7.1 3.2	8.1 3.7
5 x 2½ 125 x 65	2.75 69.9	2.88 73.0	3245.9 14.4	4.75 120.7	8.13 206.5	4.38 111.3	3.37 85.6	5/8" x 4¾" M16 x 121	7.3 3.3	8.7 3.9

† Proper hole preparation is required for effective sealing and performance. Check the pipe seal surface within 5/8" (15.9mm) of the hole to be certain it is free from conditions that would affect proper gasket sealing. Remove any sharp or rough edges from the hole or upper housing contact area, that might affect assembly, proper seating of the locating collar or flow from the outlet. For crosses, ensure double outlet holes are aligned on opposite sides of the pipe.

‡ Maximum pressure and end load are total from all loads based on standard weight steel pipe. Pressure ratings and end loads may differ on other pipe materials and/or wall thickness. Contact Tyco Fire & Building Products for details. Please refer to General Notes on page 14.

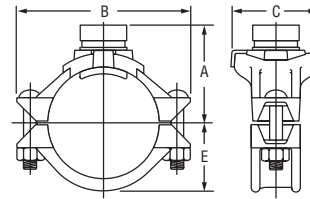


FIGURE 730 BRANCH OUTLET WITH GROOVED BRANCH (TEE CONFIGURATION)

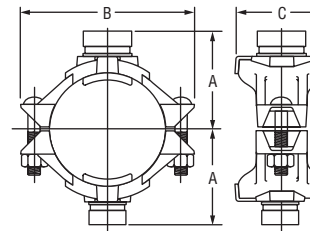


FIGURE 730 BRANCH OUTLETS WITH GROOVED BRANCH (CROSS CONFIGURATION)

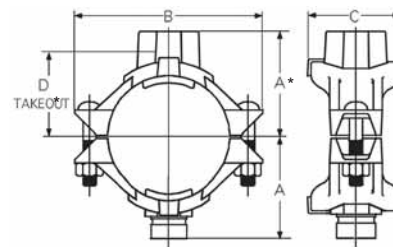


FIGURE 730 BRANCH OUTLET WITH ONE FEMALE NPT/ISO 7-1 THREADED BRANCH & ONE GROOVED BRANCH (CROSS CONFIGURATION)

* see pages 49 & 50 for dimensions

BRANCH
OUTLETS

BRANCH OUTLETS

Figure 730 Mechanical Tee - Grooved

Nominal Size Run x Branch Inches mm	Hole Dia.†		Max.‡ End Load (Branch) Lbs. kN	Nominal Dimensions				Bolt Size Inches mm	Tee Approx. Weight Lbs. Kg	Cross Approx. Weight Lbs. Kg
	Hole Inches mm	Max. Inches mm		A Inches mm	B Inches mm	C Inches mm	E Inches mm			
5 x 76.1mm 125 x 65	2.75 69.9	2.88 73.0	3534.3 15.7	4.75 120.7	8.13 206.5	4.38 111.3	3.37 85.6	M16 x 121	7.3 3.3	8.7 3.9
5 x 3 125 x 80	3.50 88.9	3.63 92.1	4810.6 21.4	5.00 127.0	8.13 206.5	5.13 130.3	3.37 85.6	5/8" x 4 3/4" M16 x 121	7.6 3.4	14.7 6.7
165.1mm x 1 1/4 150 x 32	2.00 50.8	2.13 54.0	1082.1 4.8	5.13 130.3	9.25 235.0	3.56 90.4	3.90 99.1	M16 x 121	6.9 3.1	7.9 3.6
165.1mm x 1 1/2 150 x 40	2.00 50.8	2.13 54.0	1417.6 6.3	5.13 130.3	9.25 235.0	3.56 90.4	3.90 99.1	M16 x 121	7.4 3.4	8.9 4.0
165.1mm x 2 150 x 50	2.50 63.5	2.63 66.7	2215.1 9.9	5.13 130.3	9.25 235.0	4.06 103.1	3.90 99.1	M16 x 121	7.5 3.4	8.9 4.0
165.1mm x 2 1/2 150 x 65	2.75 69.9	2.88 73.0	3245.9 14.4	5.13 130.3	9.25 235.0	4.38 111.3	3.90 99.1	M16 x 121	7.5 3.4	11.1 5.0
165.1mm x 76.1mm 150 x 65	2.75 69.9	2.88 73.0	3534.3 15.7	5.13 130.3	9.25 235.0	4.38 111.3	3.90 99.1	M16 x 121	7.5 3.4	11.1 5.0
165.1mm x 3 150 x 80	3.50 88.9	3.63 92.1	4810.6 21.4	5.50 139.7	9.25 235.0	5.13 130.3	3.90 99.1	M16 x 121	9.5 4.3	14.1 6.4
165.1mm x 4 150 x 100	4.50 114.3	4.63 117.5	7952.2 35.4	5.38 136.7	9.25 235.0	6.13 155.7	3.90 99.1	M16 x 121	10.0 4.5	20.1 9.1
6 x 1 1/4 150 x 32	2.00 50.8	2.13 54.0	1082.1 4.8	5.13 130.3	9.25 235.0	3.56 90.4	3.90 99.1	5/8" x 4 3/4" M16 x 121	6.9 3.1	7.9 3.6
6 x 1 1/2 150 x 40	2.00 50.8	2.13 54.0	1417.6 6.3	5.13 130.3	9.25 235.0	3.56 90.4	3.90 99.1	5/8" x 4 3/4" M16 x 121	7.4 3.4	8.9 4.0
6 x 2 150 x 50	2.50 63.5	2.63 66.7	2215.1 9.9	5.13 130.3	9.25 235.0	4.06 103.1	3.90 99.1	5/8" x 4 3/4" M16 x 121	7.5 3.4	8.9 4.0
6 x 2 1/2 150 x 65	2.75 69.9	2.88 73.0	3245.9 14.4	5.13 130.3	9.25 235.0	4.38 111.3	3.90 99.1	5/8" x 4 3/4" M16 x 121	7.5 3.4	11.1 5.0
6 x 76.1mm 150 x 65	2.75 69.9	2.88 73.0	3534.3 15.7	5.13 130.3	9.25 235.0	4.38 111.3	3.90 99.1	M16 x 121	7.5 3.4	11.1 5.0
6 x 3 150 x 80	3.50 88.9	3.63 92.1	4810.6 21.4	5.50 139.7	9.25 235.0	5.13 130.3	3.90 99.1	5/8" x 4 3/4" M16 x 121	9.5 4.3	14.1 6.4
6 x 4 150 x 100	4.50 114.3	4.63 117.5	7952.2 35.4	5.38 136.7	9.25 235.0	6.13 155.7	3.90 99.1	5/8" x 4 3/4" M16 x 121	10.0 4.5	20.1 9.1
8 x 2 1/2 200 x 65	2.75 69.9	2.88 73.0	3245.9 14.4	6.25 158.8	12.50 317.5	4.38 111.3	4.90 124.5	M20 x 121	10.2 4.6	12.1 5.5
8 x 76.1mm 200 x 65	2.75 69.9	2.88 73.0	3534.3 15.7	6.25 158.8	12.50 317.5	4.38 111.3	4.90 124.5	M20 x 121	10.2 4.6	12.1 5.5
8 x 3 200 x 80	3.50 88.9	3.63 92.1	4810.6 21.4	6.50 165.1	12.50 317.5	5.13 130.3	4.90 124.5	3/4" x 4 3/4" M20 x 121	12.5 5.7	15.1 6.8
8 x 4 200 x 100	4.50 114.3	4.63 117.5	7952.2 35.4	6.38 162.1	12.50 317.5	6.13 155.7	4.90 124.5	3/4" x 4 3/4" M20 x 121	12.5 5.7	21.1 9.6

† Proper hole preparation is required for effective sealing and performance. Check the pipe seal surface within 5/8" (15.9mm) of the hole to be certain it is free from conditions that would affect proper gasket sealing. Remove any sharp or rough edges from the hole or upper housing contact area, that might affect assembly, proper seating of the locating collar or flow from the outlet. For crosses, ensure double outlet holes are aligned on opposite sides of the pipe.

‡ Maximum pressure and end load are total from all loads based on standard weight steel pipe. Pressure ratings and end loads may differ on other pipe materials and/or wall thickness. Contact Tyco Fire & Building Products for details.

Please refer to General Notes on page 14.

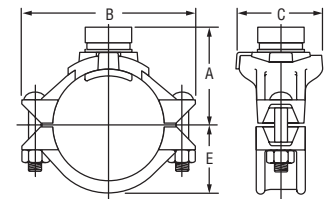


FIGURE 730 BRANCH OUTLET WITH GROOVED BRANCH (TEE CONFIGURATION)

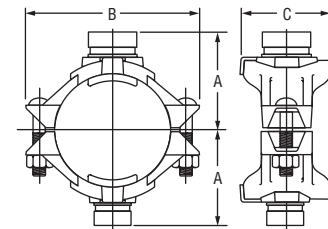


FIGURE 730 BRANCH OUTLETS WITH GROOVED BRANCH (CROSS CONFIGURATION)

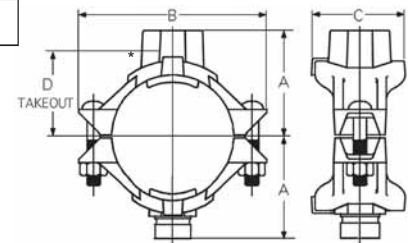


FIGURE 730 BRANCH OUTLET WITH ONE FEMALE NPT/ISO 7-1 THREADED BRANCH & ONE GROOVED BRANCH (CROSS CONFIGURATION)

* see pages 49 & 50 for dimensions